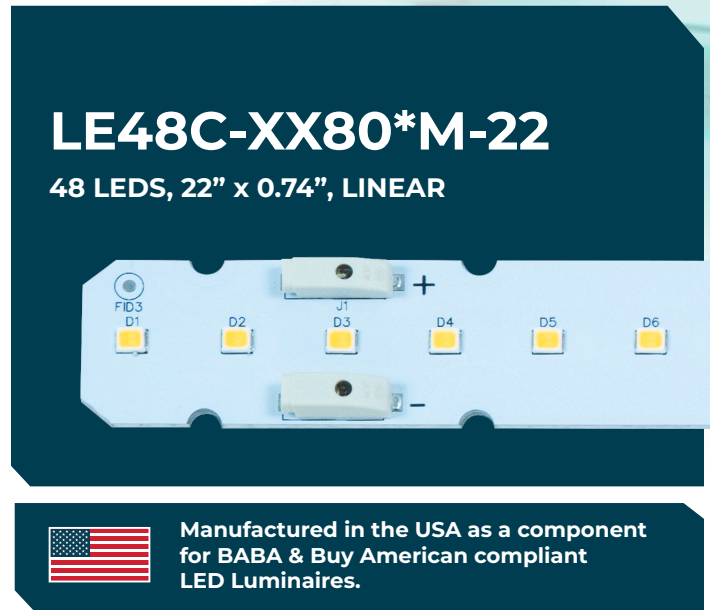


Electrical Specifications

Driver type:	Constant Current
Drive Current:	600 mA Typ. / 800 mA Max.
Total Board Power:	21.4 W Typ. / 29.28 W Max
Life:	50,000 Hrs. @ 85 °C
Max Junction Temp:	85 °C
Max Test Point Temp:	120 °C
Operating Temp:	-40 °C to +105 °C
Storage Temp:	-40 °C to +100 °C
Viewing Angle (FWHM):	120° Lambertian distribution

* The "M" is a reference letter that indicates that the module can be built with either Cree or Samsung LEDs.



LE48C-XX80*M-22 • Nominal Forward Voltage: 35.76 V Nom. / 36.6 V Max.

Model	Color Temp (K)	Forward Voltage (V)	Drive Current (mA)	Power (W)	Lumens	Efficacy (Lm/W)
LE48C-3080*M-22	3000	35.76	600	21.4	3,608	168
LE48C-4080*M-22	4000	35.76	600	21.4	3,765	175
LE48C-5080*M-22	5000	35.76	600	21.4	3,817	178

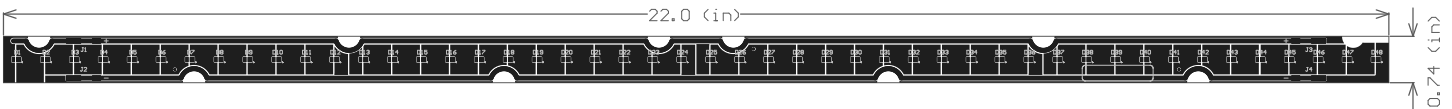
Overview:

- Constant Current DC Array
- Designed for easy use in standard luminaires
- 3-step MacAdam Ellipse
- UL Recognized Components

Connectivity:

For Poke-In Connectors use #24-18 AWG stranded or BJB Connector, Part # 46.141.1001.50

Dimensions:



- 1.0 W/m²K Aluminum MCPCB material
- 1 mm board thickness

Disclaimer: The modules referenced in this document are designed for use with either Cree or Samsung LEDs, unless explicitly specified otherwise, as is the case with Turtle-friendly modules. The inclusion of the letter "M" in the model number signifies that the standard configuration assumes the utilization of Cree or Samsung LEDs.

3401 Avenue D, Arlington, TX 76011 • 800-375-6355 • www.aceleds.com

Data is based upon tests performed by AC Electronics in a controlled environment and representative performance. Actual performance can vary depending on operating conditions. Specifications are subject to change without notice. All specifications are nominal unless otherwise noted.

