



The Smallest Possible Factors™



Constant Current LED Driver

Model Number AC15CD250AT2Q

Input Voltage: 120-277 VAC (±10%)

Input Frequency: 50/60 Hz

Dimming: 5 to 100%

Surge Protection: 2 Kv

Side Mount/Leads

Multi-Switching Current

PHYSICAL DIMENSIONS:

Length: 2.29"
Width: 1.20"
Height: 0.91"
Mounting: 2.2"
Weight: 0.10 lbs.

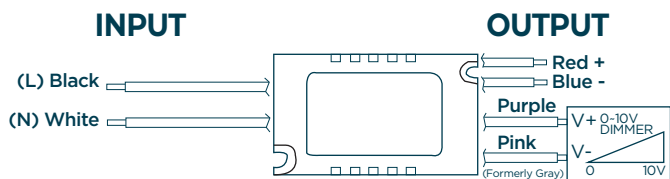
ACTUAL SIZE



ELECTRICAL SPECIFICATIONS:

Output Power Max.	Input Power	Input Current	Min. PF (full load)	Max. THD (full load)	Output Voltage	Output Current	T case Max.	Min. Starting Temp.	IP Rating	Dimming Protocol	Dimming Range	Efficiency Up To
15 W	17.2 W	0.16 A@120 V 0.07 A@277 V	>0.9	<20	32-60 V	250 mA ±5%	75° C	0° C	20	0 to 10 V	7 to 100%	87%
10.5 W	12.2 W	0.11 A@120 V 0.05 A@277 V	>0.9	<20	32-60 V	175 mA ±5%	75° C	0° C	20	0 to 10 V	5 to 100%	86%
6 W	7.3 W	0.07 A@120 V 0.03 A@277 V	>0.9	<20	32-60 V	100 mA ±5%	75° C	0° C	20	0 to 10 V	3 to 100%	82%

WIRING:



Note: Gray (-) dimming wire has been changed to pink per the 2020 NEC section 410.69 and NEMA.

LEAD LENGTH:

Black 6" | Blue 6" | Purple 6"
White 6" | Red 6" | Pink 6"

APPROVED DIMMERS:

Lutron NTSTV-DV | Leviton IP710 DL
Lutron NFTV | Watt Stopper ADF 120277

To order or consult with one of our engineers, contact us at:

800-375-6355 / aceleds.com



SAFETY & PERFORMANCE:

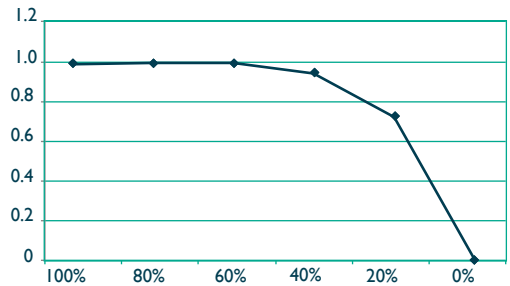
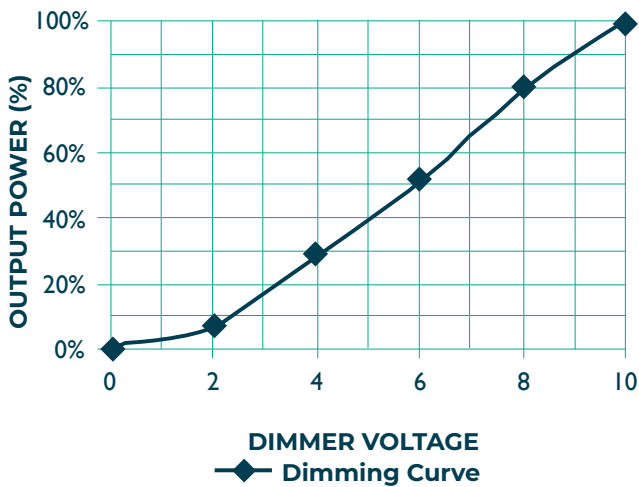
- Class P Listed
- Class A sound rating
- No PCBs
- Open/Short Circuit Protection
- LED driver has a life expectancy of 50,000 hours at Tcase of $\leq 75^{\circ}\text{C}$
- Warranty: 5 yrs based on max case temp of 75°C^*
- Input/Output Isolation
- Surge Protection (2 KV)
- Suitable for Dry Location
- Dimming Curve on the next page
- Gray (-) dimming wire has been changed to pink per the 2020 NEC section 410.69 and NEMA.

INSTALLATION:

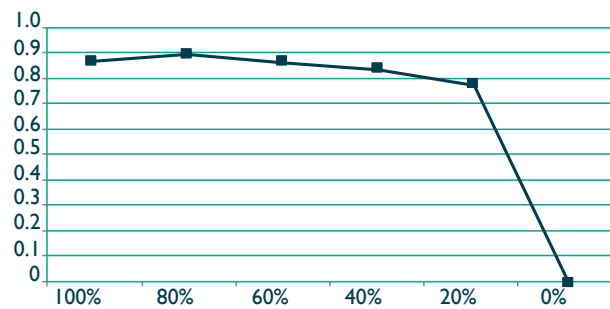
- LED drivers shall be installed inside electrical enclosures
- Max Remote installation distance is 33 ft
- 22 AWG 600V/105C tinned stranded copper lead-wires are required to use in installation

*ACE LEDS warrants to the purchaser that each LED Driver will be free from defects in material or workmanship for a period of 5 years from date of manufacture when operated at max case temp of up to $\leq 75^{\circ}\text{C}$ when properly installed and under normal conditions of use. See aceleds.com for complete warranty policy.

PERFORMANCE METRICS: AC10CD250AT2K



■ Power Factor Vs. Output Power



■ Efficiency Vs. Output Power

3401 Avenue D, Arlington, TX 76011
800-375-6355 • aceleds.com



Data is based upon tests performed by ACE LEDS in a controlled environment and representative performance. Actual performance can vary depending on operating conditions. Specifications are subject to change without notice. All specifications are nominal unless otherwise noted.

