

LE192C/XX80CRW/48

48" LINEAR



Manufactured in the USA with domestic and foreign components.

Electrical Specifications

Driver type	Constant Current
Drive Current	1440 mA Typ. / 2640 mA Max.
Total Board Power	48.2 W Ty. / 91.5 W Max.
Life	50,000 Hrs. @ 85°C
Max Junction Temp:	85°C
Max Test Point Temp:	120°C
Operating Temp:	-40°C to +105°C
Storage Temp:	-40°C to +100°C
Viewing Angle (FWHM):	120° Lambertian distribution

LE192C/XX80CRW/48 • Nominal Forward Voltage: 33.5 V Nom. / 34.7 V Max.

Model	Current mA	Initial Lumens	Voltage	Power	Lm/W
LE192C/4080CRW/48	480	2819	31.96	15.34	184
	960	5580	32.6	31.30	178
	1440	8234	33.2	47.81	172
	1920	10787	33.76	64.82	166
	2400	13241	34.24	82.18	161
	2640	14434	34.48	91.03	159

CCT	Multiplier
2700	91%
3000	94%
3500	98%
5000	100%
6500	100%
90CRI	85%

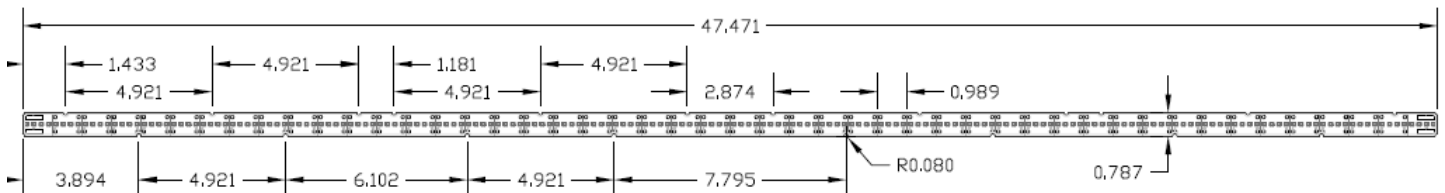
Overview:

- Constant Current DC Array
- 4 LEDs in series x 48 parallel strings (Breakable per 1")
- Designed for easy use in standard luminaires
- 3-step MacAdam Ellipse
- UL Recognized Components

Connectivity:

For Poke-In Connectors use #24-18 AWG stranded or BJB Connector, Part # 46.141.1001.50

Dimensions:



- MCPCB board material
- 1.6mm board thickness

3401 Avenue D, Arlington, TX 76011 • 800-375-6355 • www.aceleds.com

Data is based upon tests performed by AC Electronics in a controlled environment and representative performance. Actual performance can vary depending on operating conditions. Specifications are subject to change without notice. All specifications are nominal unless otherwise noted.

