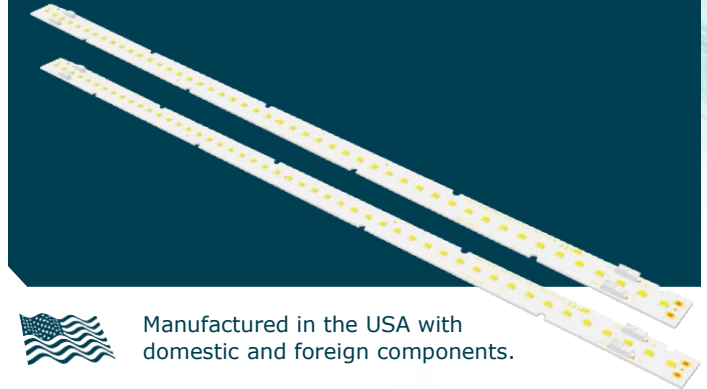


LE112C3058CR221

22" LINEAR



Manufactured in the USA with domestic and foreign components.

Electrical Specifications

Driver type	Constant Current
Drive Current	600 mA Typ. / 960 mA Max.
Total Board Power	24.53 W Typ. / 42.1 W Max.
Life	50,000 Hrs. @ 85°C
Max Junction Temp:	125°C
Max Test Point Temp:	120°C
Operating Temp:	-40°C to +105°C
Storage Temp:	-40°C to +100°C
Viewing Angle (FWHM):	120° Lambertian distribution

LE112C3058CR221 • Nominal Forward Voltage: 40.88 V Nom. / 42.98 V

Color Temp Channel	Current mA	Initial Lumens	Voltage	Power	Lm/W
3000K Channel	200	1353	38.22	7.64	177
	400	2596	39.62	15.85	164
	600	3750	40.88	24.53	153
	800	4815	42.00	33.60	143
	960	5690	21.42	41.13	138
5000K Channel	200	1410	38.22	7.64	184
	400	2708	39.62	15.85	171
	600	3912	40.88	24.53	159
	800	5022	42.00	33.60	149
	960	5932	21.42	41.13	144

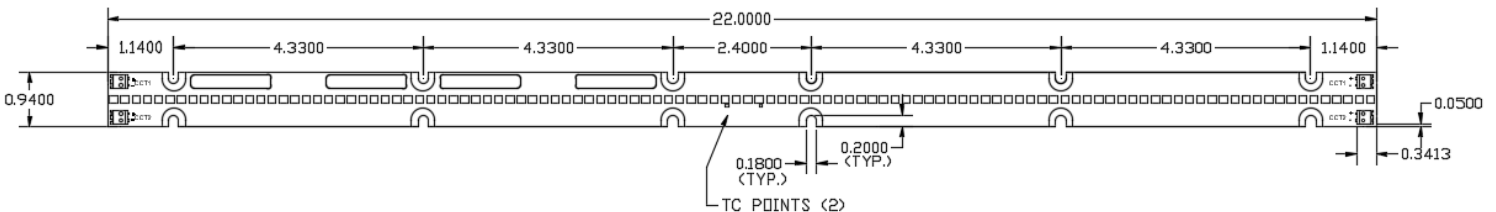
Overview:

- Constant Current DC Array
- 14 LEDs in series x 4 parallel strings (2 Circuits)
- Designed for easy use in standard luminaires
- 3-step MacAdam Ellipse
- UL Recognized Components

Connectivity:

For Poke-In Connectors use 24-18 AWG stranded or BJB Connector, Part 46.142.1001.50

Dimensions:



- FR4 PCB material
- 0.31" mm board thickness

3401 Avenue D, Arlington, TX 76011 • 800-375-6355 • www.aceleds.com

Data is based upon tests performed by AC Electronics in a controlled environment and representative performance. Actual performance can vary depending on operating conditions. Specifications are subject to change without notice. All specifications are nominal unless otherwise noted.