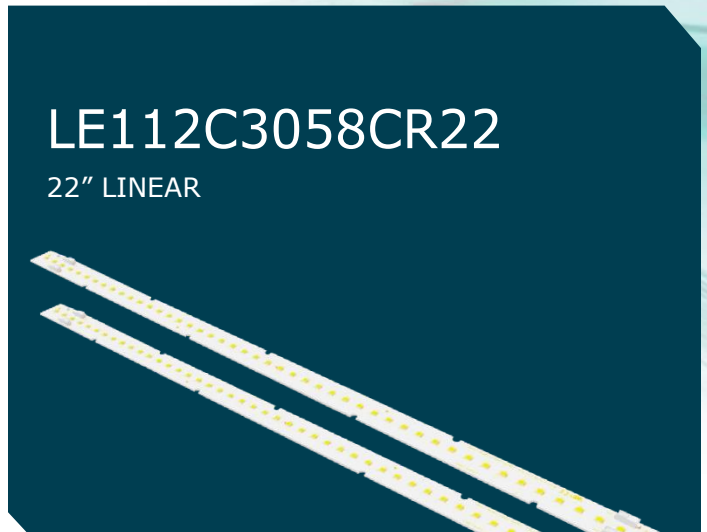


LE112C3058CR22

22" LINEAR



Manufactured in the USA with domestic and foreign components.

Electrical Specifications

Driver type	Constant Current
Drive Current	1200 mA Typ. / 1920 mA Max.
Total Board Power	24.53 W Typ. / 42.1W Max.
Life	50,000 Hrs. @ 85°C
Max Junction Temp:	125°C
Max Test Point Temp:	120°C
Operating Temp:	-40°C to +105°C
Storage Temp:	-40°C to +100°C
Viewing Angle (FWHM):	120° Lambertian distribution

LE112C3058CR22 • Nominal Forward Voltage: 20.44 V Nom. / 21.49 V

Color Temp Channel	Current mA	Initial Lumens	Voltage	Power	Lm/W
3000K Channel	400	1353	19.11	7.64	177
	800	2596	19.81	15.85	164
	1200	3750	20.44	24.53	153
	1600	4815	21.00	33.60	143
	1920	5690	21.42	41.13	138
5000K Channel	400	1410	19.11	7.64	184
	800	2708	19.81	15.85	171
	1200	3912	20.44	24.53	159
	1600	5022	21.00	33.60	149
	1920	5932	21.42	41.13	144

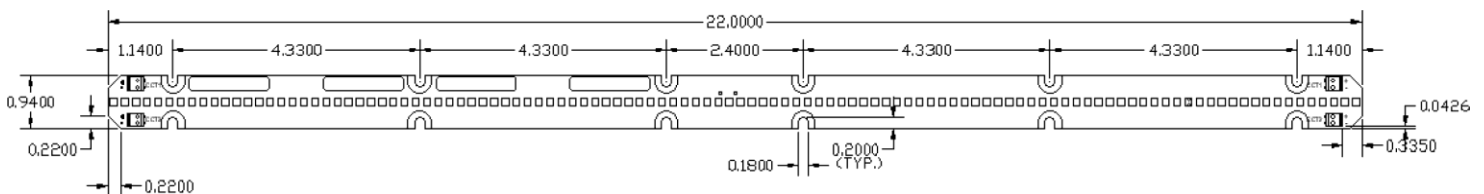
Overview:

- Constant Current DC Array
- 7 LEDs in series x 8 parallel strings (2 Circuits)
- Designed for easy use in standard luminaires
- 3-step MacAdam Ellipse
- UL Recognized Components

Connectivity:

For Poke-In Connectors use 24-18 AWG stranded or BJB Connector, Part 46.142.1001.50

Dimensions:



- FR4PCB material
- 0.8 mm board thickness

3401 Avenue D, Arlington, TX 76011 • 800-375-6355 • www.aceleds.com

Data is based upon tests performed by AC Electronics in a controlled environment and representative performance. Actual performance can vary depending on operating conditions. Specifications are subject to change without notice. All specifications are nominal unless otherwise noted.